

175LB. TOW BEHIND DROP SPREADER

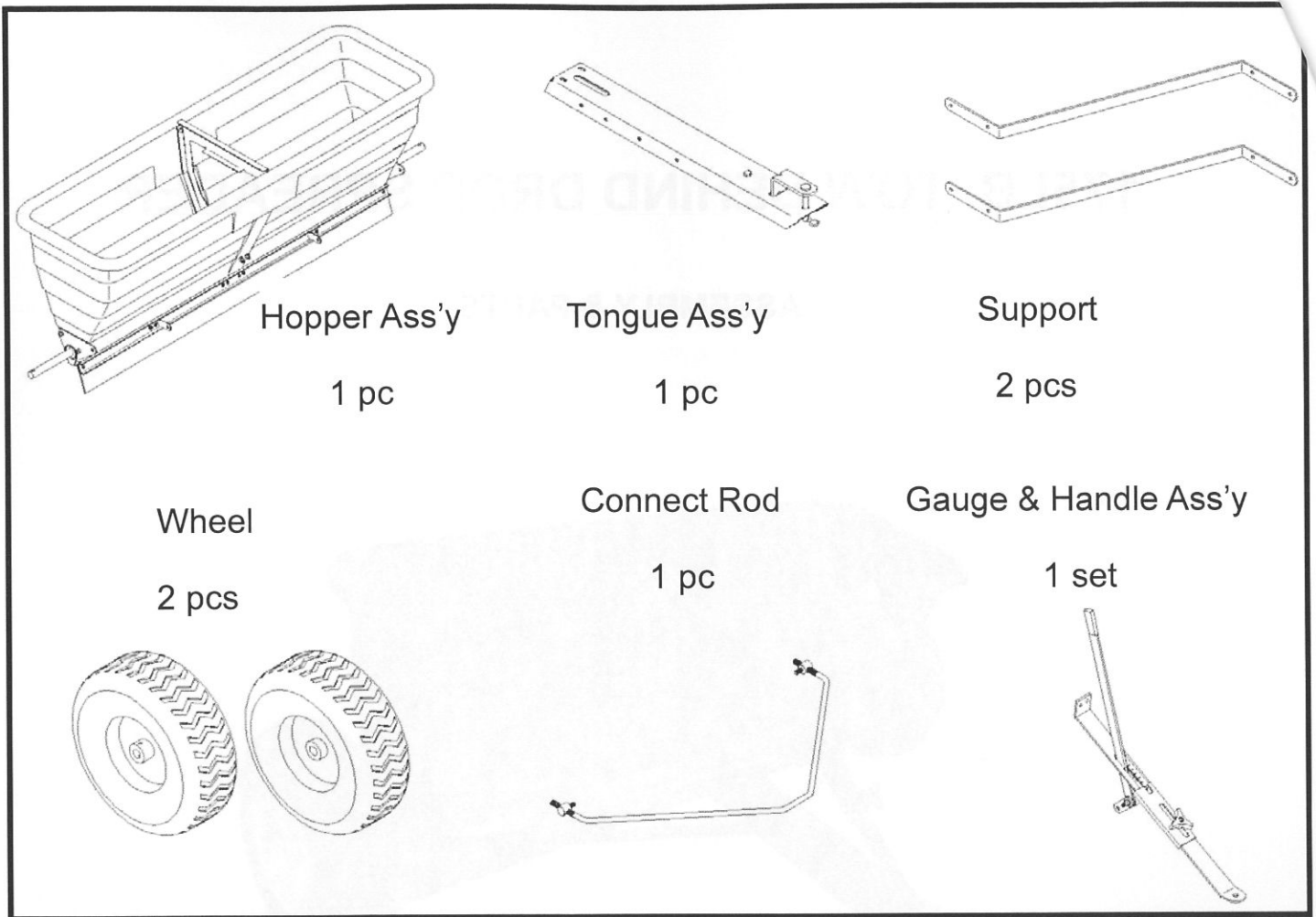
ASSEMBLY & PARTS



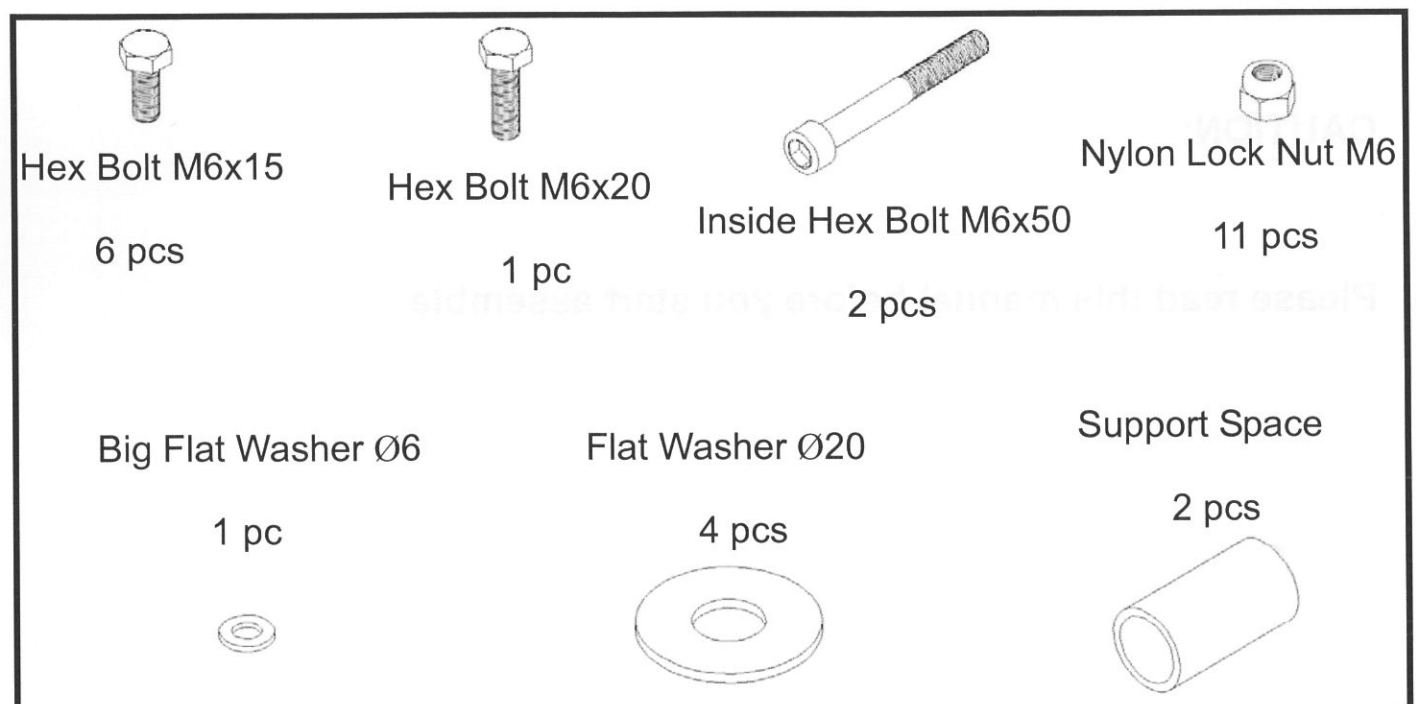
CAUTION:

Please read this manual before you start assemble

CARTON CONTENTS



Hardware contents please check:



ASSEMBLY

1. Take out the hardware pack and all individual parts from the carton and lay out as shown on page 2.
2. Loose two Nylon Lock Nut M6 from the two bolts(see figure A) on the hopper ass'y, then attach the tongue and use the removed two Lock Nut M6 the tongue with the hopper ass'y(see figure B).

Hopper Ass'y

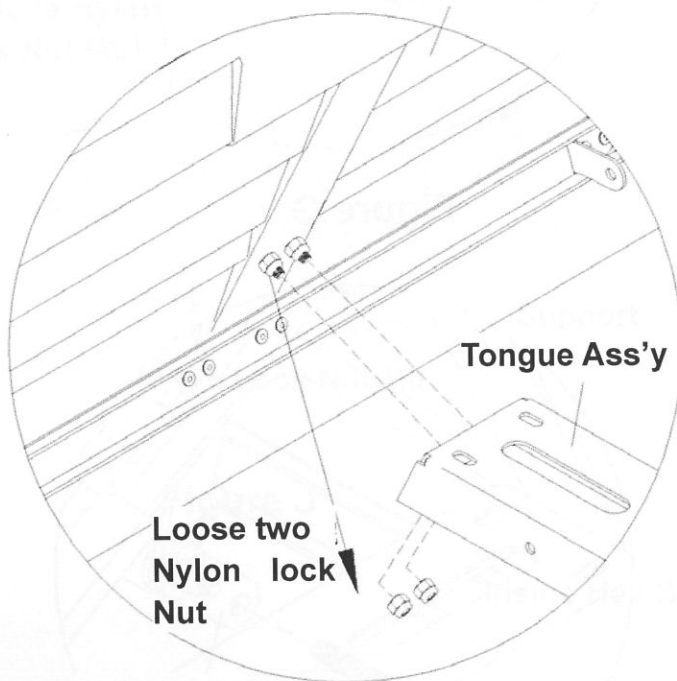


Figure A

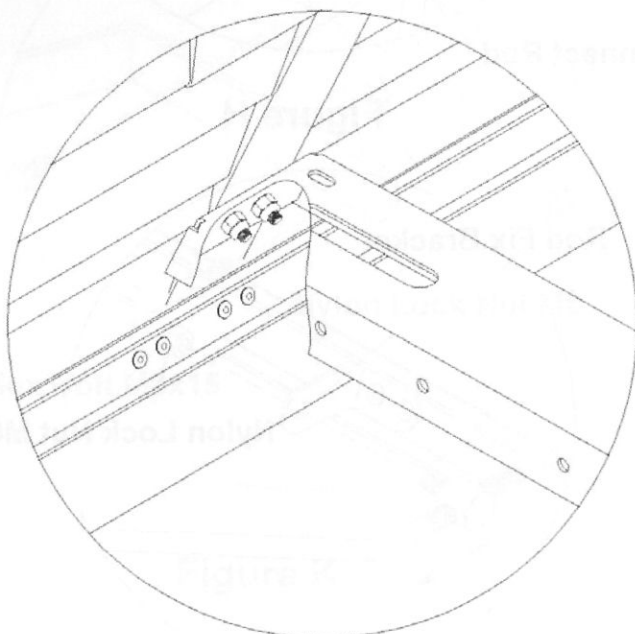


Figure B

3. Remove one Nylon Lock Nut M6 from one bolt M6x20 Hex Bolt on hopper ass'y, then attach the Gauge & Handle Ass'y on, using the removed Lock Nut M6 from the gauge & handle ass'y(see Figure C). Then remove another Lock Nut M6, insert a flat washer $\varnothing 6$, lock the Gauge & Handle Ass'y by the removed Lock Nut M6(see Figure C and D).

Hex Bolt M6x20

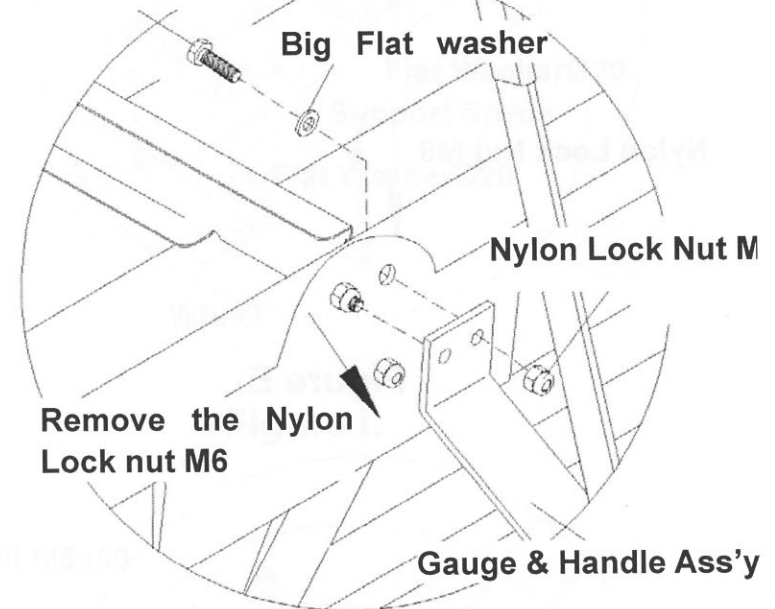


Figure C

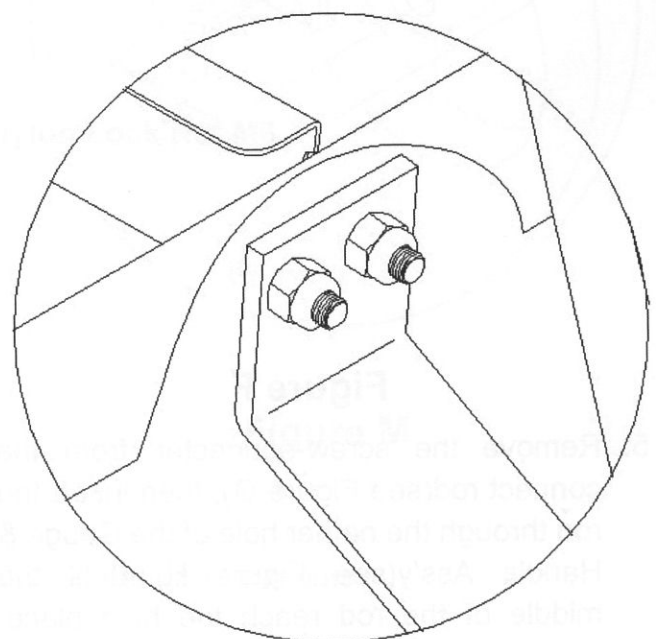


Figure D

- Lock the another end of Gauge & Handle Ass'y to the Tongue using the Hex Bolt M8x25 and Nylon Lock Nut M8 which are assembled on the tongue originally(see Figure E and F).

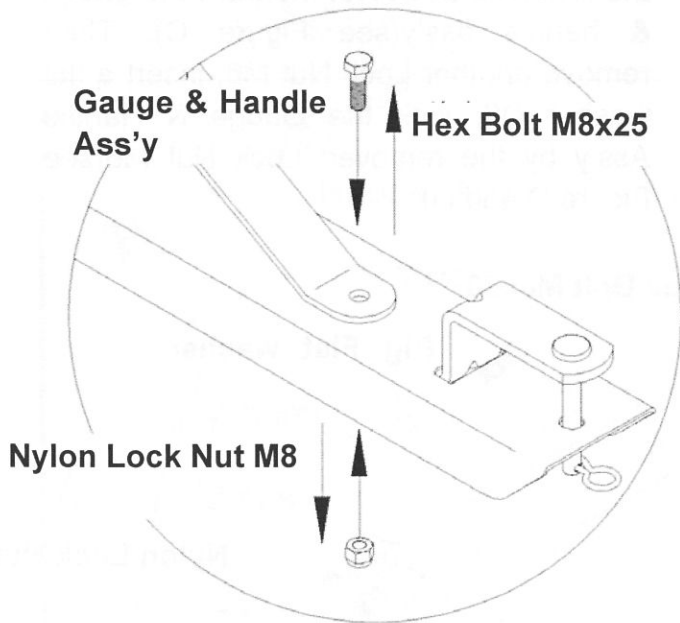


Figure E

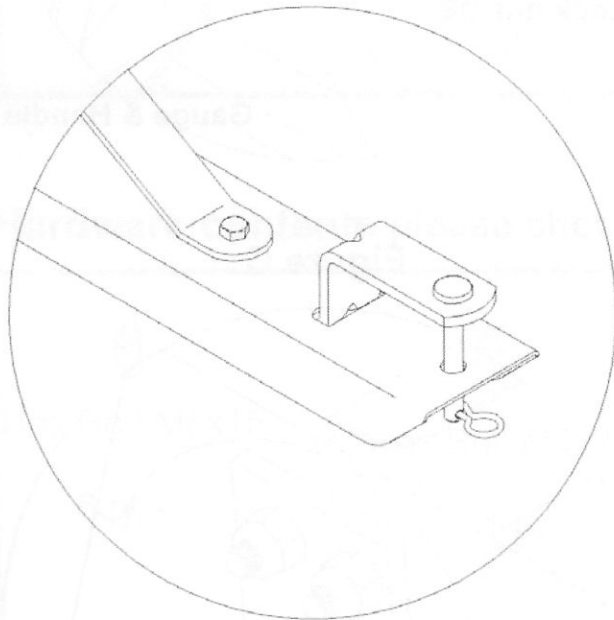


Figure F

- Remove the screw-connector from the connect rod(see Figure G), then insert the rod through the nether hole of the Gauge & Handle Ass'y(see Figure H) until the middle of the rod reach the hole place, then rescrew the screw-connector on the rod and assembled it with Rod Fix Bracket by Nylon Lock Nut M6(see Figure I) Repeat at the other end of connect rod.

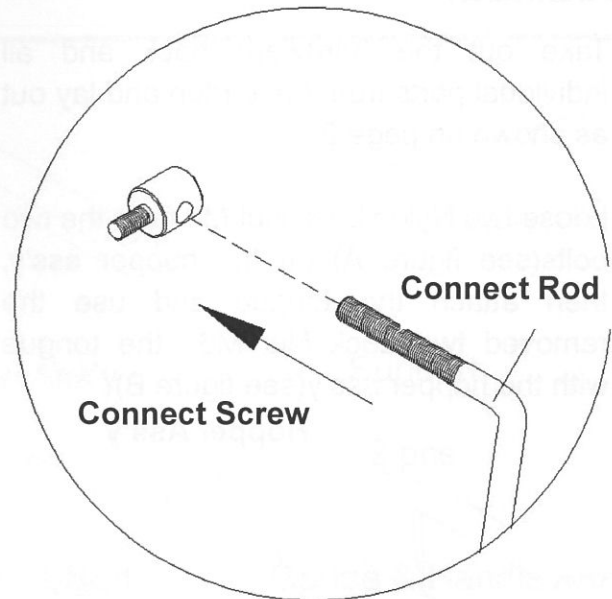


Figure G

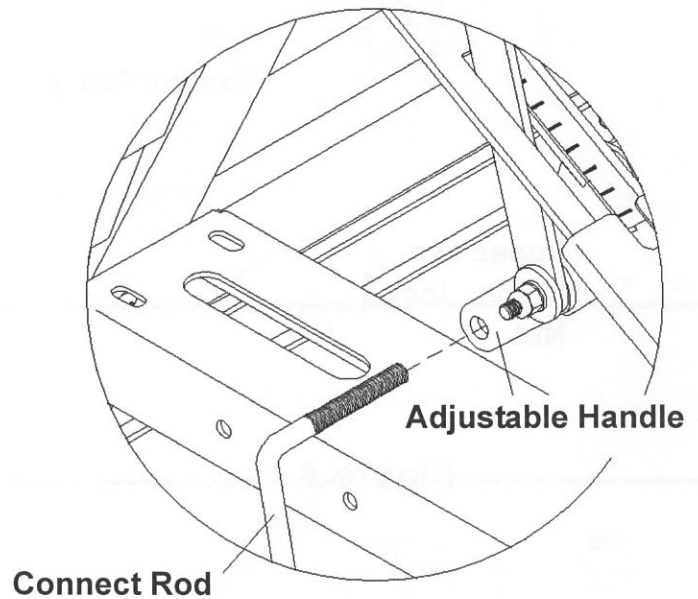


Figure H

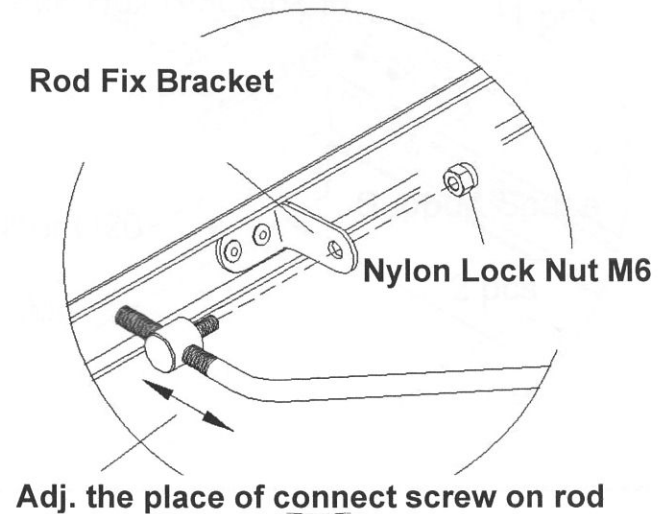


Figure I

6. Remove the Nylon Lock Nut M6 from side of the hopper ass'y, attach the Support using the removed nut. Use a M6x15 Hex Bolt to lock the Support Fix Plate and Support by Nylon Lock Nut M6(see Figure J). Not tighten the nut. Then lock the other end of the Support to the Tongue by 2 pcs of Hex Bolt M6x15 and 2 pcs of Nylon Lock Nut M6(see Figure K). Repeat at the other side of hopper.

7. Assemble the below parts at the wheel axle: Flat WasherØ20, Support Space, Flat WasherØ20 and Wheel(see Figure L). Align the hole on wheel hub and axle then use Inside Hex Bolt M6x50 and Nylock Nut M6 lock them(see Figure M). Repeat at the other side of axle.

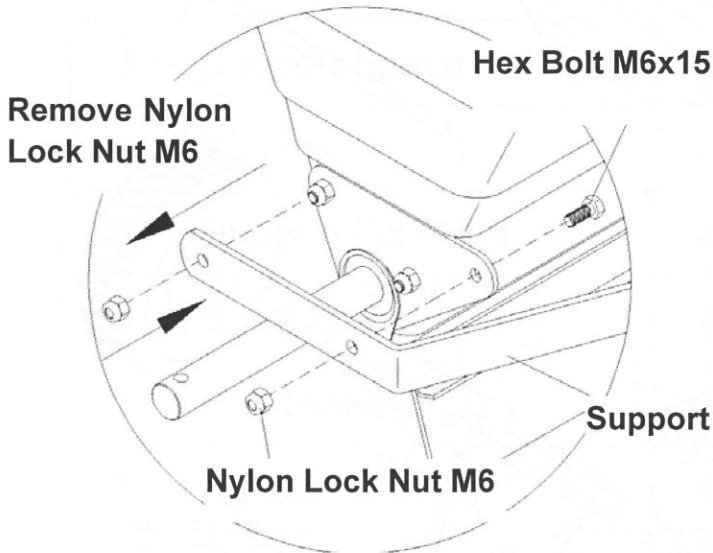


Figure J

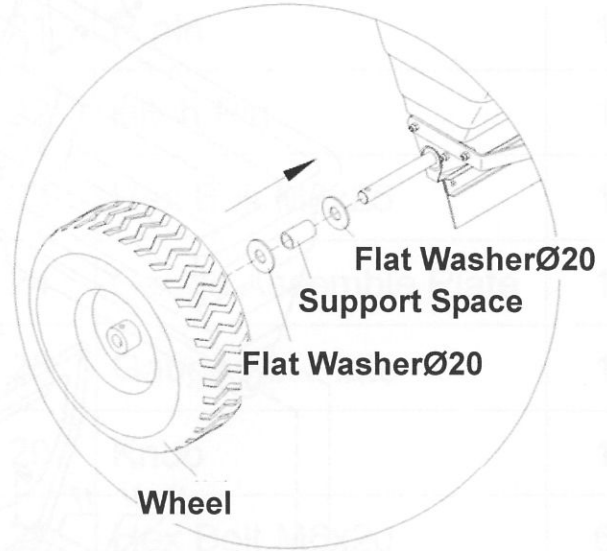


Figure L

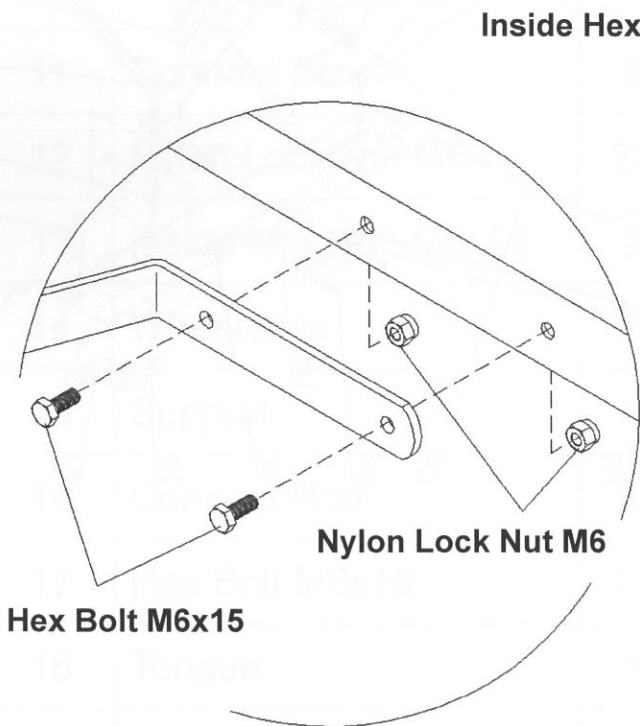


Figure K

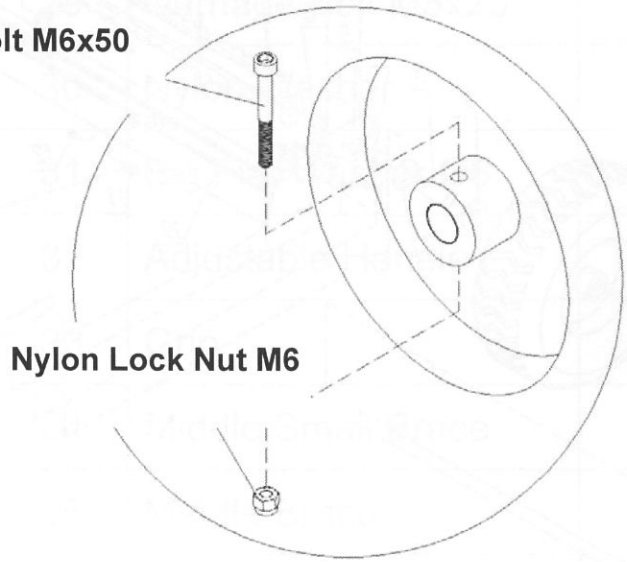
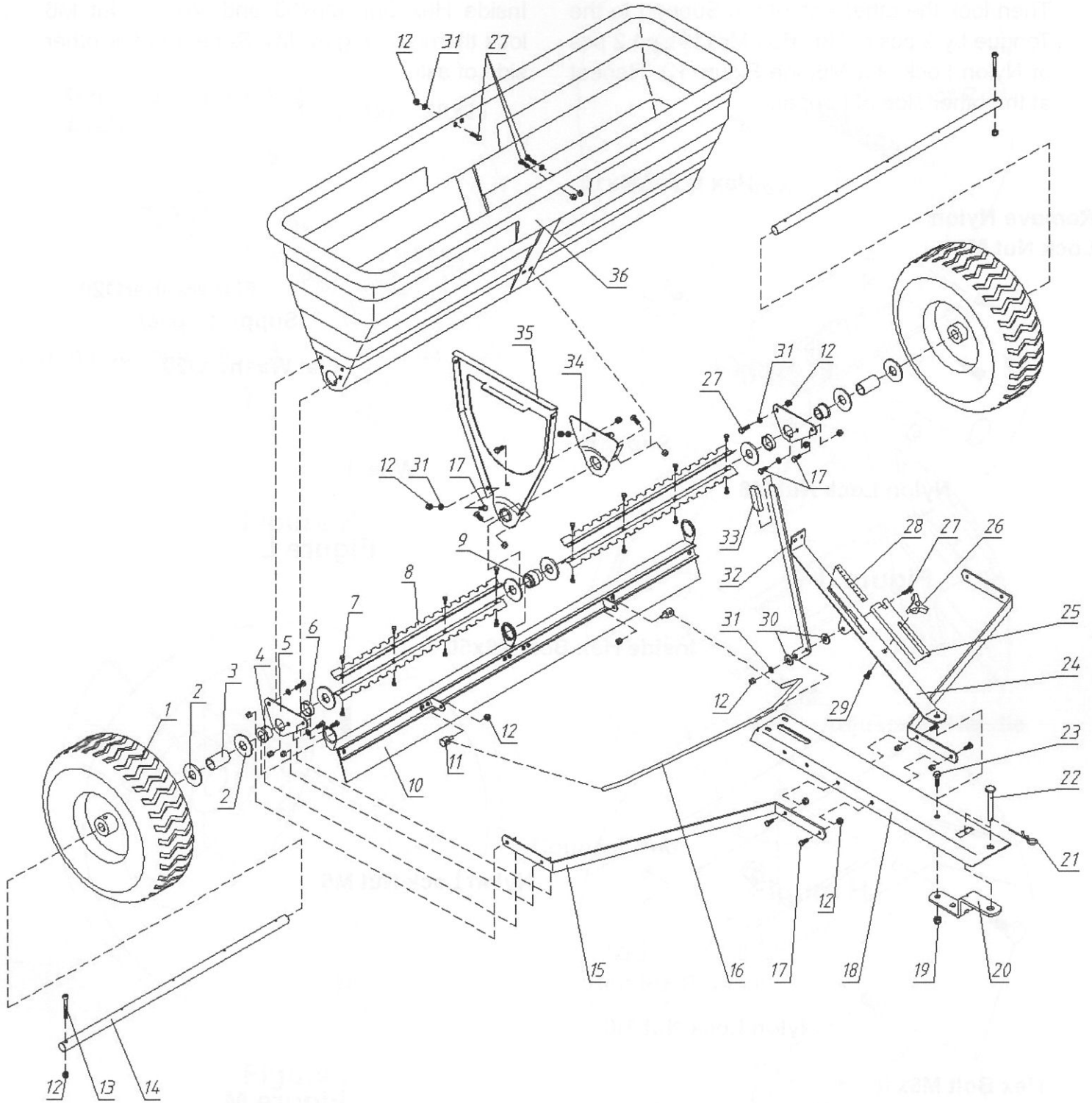


Figure M

8. Tighten all of the nuts.

EXPLODED DRAWING



PARTS LIST

Part#	Desc	Qty	Part#	Desc	Qty
1	Wheel	2	20	Hitch Bracket	1
2	Flat Washer Ø20	8	21	R pin	1
3	Support Space	2	22	Hitch Pin	1
4	Bushing	2	23	Hex Bolt M8x25	1
5	Support Fix Plate	2	24	Gauge Assemble Plate	1
6	Short Spacer	2	25	Gauge Fix Plate	1
7	Hex Bolt M5x10	16	26	Knob	1
8	Agitator Blade	4	27	Hex Bolt M6x20	6
9	Middle Bushing	1	28	Gauge	1
10	Skirt Ass'y	1	29	Carriage Bolt M8x25	1
11	Connect Screw	2	30	Nylon Washer	2
12	Nylon Lock Nut M6	23	31	Big Flat Washer Ø6	9
13	Inside Hex Bolt M6x50	2	32	Adjustable Handle	1
14	Wheel Axle	2	33	Grip	1
15	Support	2	34	Middle Small Brace	1
16	Connect Rod	1	35	Middle Brace	1
17	Hex Bolt M6x15	13	36	Hopper	1
18	Tongue	1			
19	Nylon Lock Nut M8	1			